



2155 South Bascom Ave, Ste. 200
Campbell, CA 95008
PH: 408.879.0600
FAX: 408.377.6066

Addendum 1

PROJECT: Rebid - Interior Door Replacement at 3
Elementary Schools

Date: 8/20/2024

Berryessa Union School District
B-01-2024-25

SFA PROJECT NO: 22081

1. This Addendum shall supersede all previously issued Contract Documents wherein it modifies same. All other conditions of the Contract remain unchanged. The following changes, additions, or deletions as set forth herein shall apply to the Contract Documents and shall be made a part thereof and shall be subject to all the requirements thereof as though originally shown and/or specified.
2. Bidders shall acknowledge receipt of this Addendum on Bid Form.
3. SPECIFICATION REVISIONS
 - A. No changes
4. DRAWING REVISIONS
 - A. Majestic Way – Plan sheet A2.1 – Doors 002 and 003 and door hardware for doors 002 and 003 are not in contract.
 - B. Majestic Way – Plan sheet A9.2 – 1, Door Schedule – Type B Doors – Each Door is 36” wide not 42”.
 - C. Majestic Way – Plan sheet A9.2 – 1, Door Schedule – Fire Rating – The fire rating for all new doors is 90 minutes.
 - D. Brooktree - Plan sheet A9.2 – 1, Door Schedule – Type B Doors – Each Door is 36” wide not 42”.
 - E. Brooktree - Plan sheet A9.2 – 1, Door Schedule – Fire Rating – The fire rating for all new doors is 90 minutes.
 - F. Summerdale - Plan sheet A9.2 – 1, Door Schedule – Type B Doors – Each Door is 36” wide not 42”.
 - G. Summerdale - Plan sheet A9.2 – 1, Door Schedule – Fire Rating – The fire rating for all new doors is 90 minutes.

Attachment – Addendum 1 Plan Set – 6 pages

END OF ADDEMDUM 1

Addendum 1


GENERAL NOTES

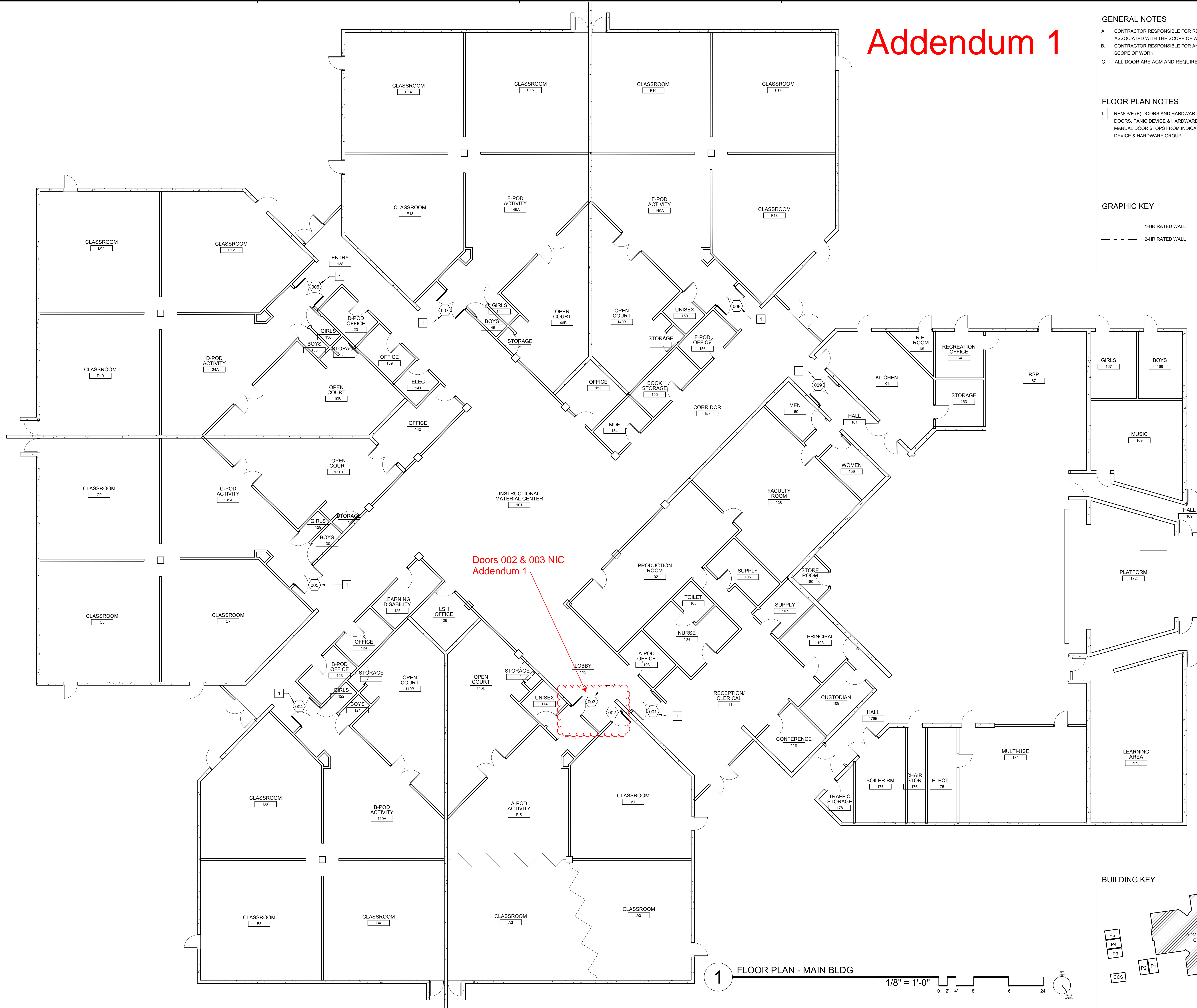
- A. CONTRACTOR RESPONSIBLE FOR REMOVAL OF OLD DOORS AND DEBRIS ASSOCIATED WITH THE SCOPE OF WORK.
- B. CONTRACTOR RESPONSIBLE FOR ANY PAINTING ASSOCIATED WITH THE SCOPE OF WORK.
- C. ALL DOOR ARE ACM AND REQUIRE LAWFUL DISPOSAL.

FLOOR PLAN NOTES

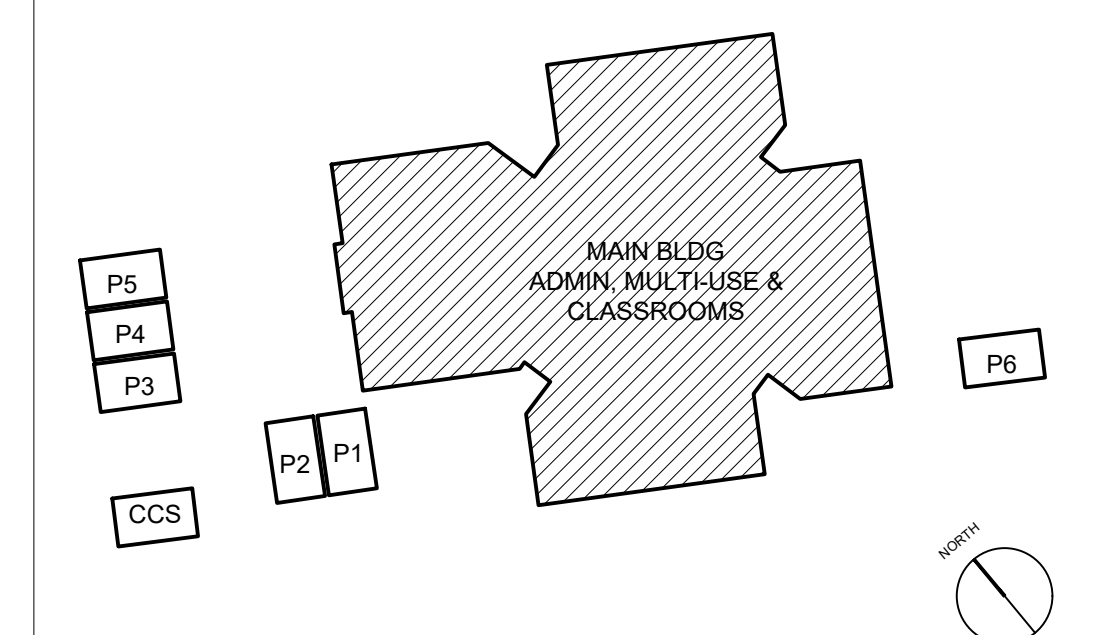
1. REMOVE (E) DOORS AND HARDWAR. (E) FRAMES TO REMAIN. INSTALL (N) DOORS, PANIC DEVICE & HARDWARE. CONTRACTOR TO REMOVE ANY MANUAL DOOR STOPS FROM INDICATED DOORS, SEE SPECS FOR PANIC DEVICE & HARDWARE GROUP.

GRAPHIC KEY

- 1-HR RATED WALL
 2-HR RATED WALL



BUILDING KEY



(A STAMP AREA)



FLOOR PLAN - MAIN BUILDING

MAJESTIC WAY ELEMENTARY SCHOOL
1855 MAJESTIC WAY, SAN JOSE, CA 95132
BERRYESSA UNION SCHOOL DISTRICT

REVISIONS		
NO.	ITEM	DATE

DRAWN BY:	KNU
CHECKED BY:	M.B.
FA JOB NO:	DATE:
2081	04/03/2023

A2.1

MAJESTIC WAY

Addendum 1

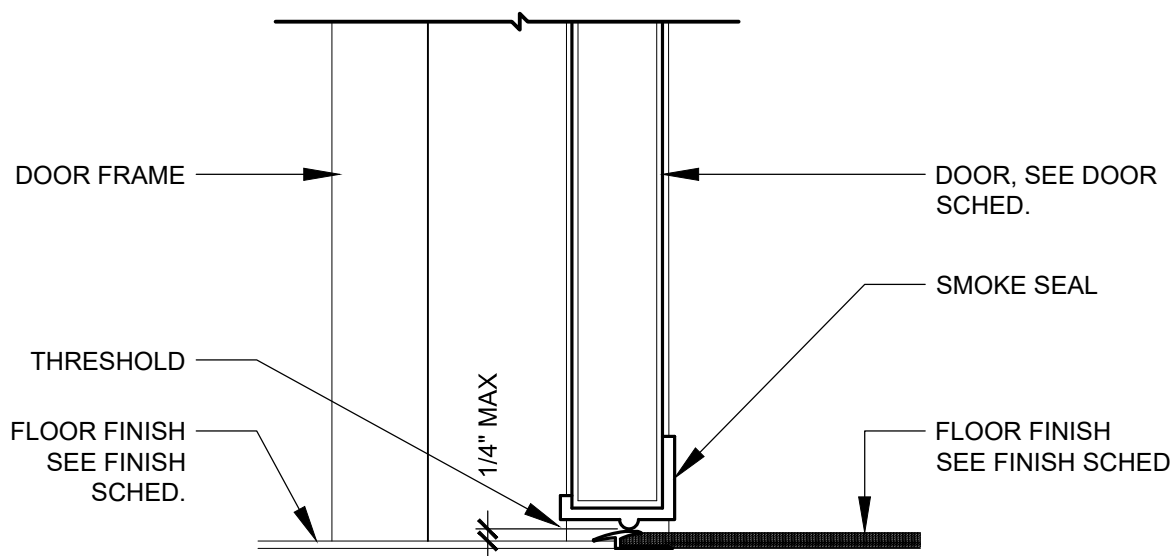
(DSA STAMP AREA)

SUGIMURA
FINNEY
ARCHITECTS

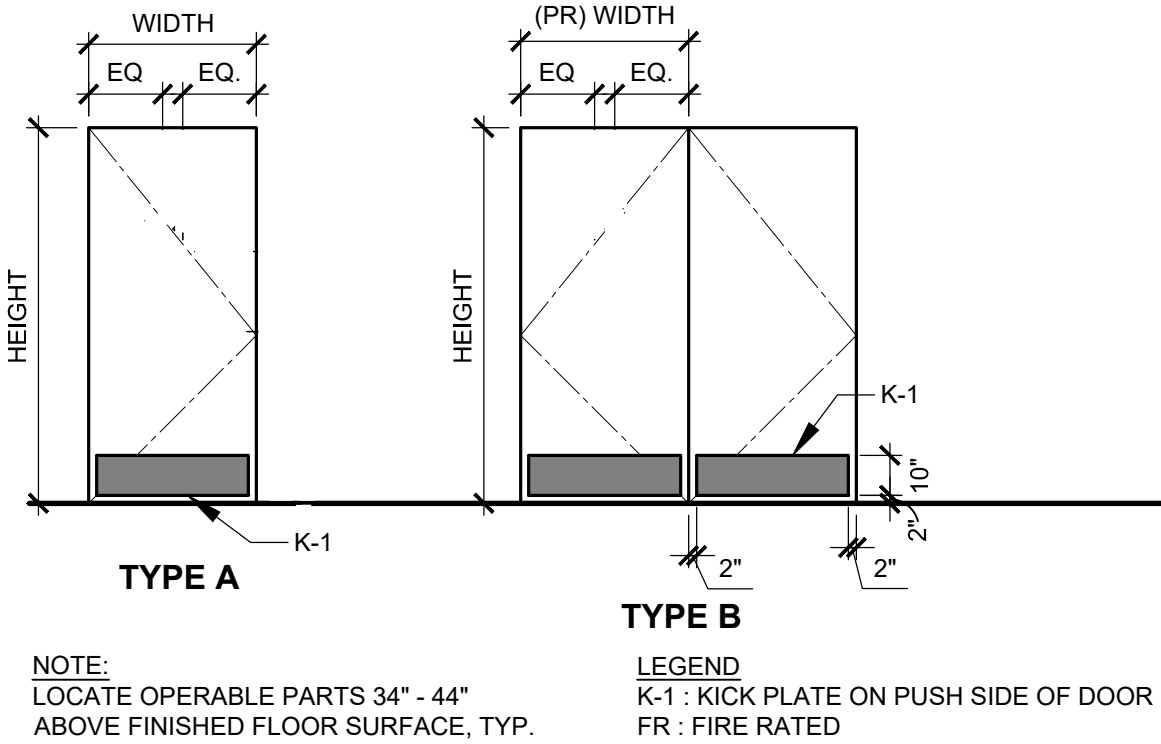
SFA

ARCHITECTURE INTERIORS PLANNING

2155 SOUTH BASCOM AVE.
SUITE 200
CAMPBELL, CA 95003
PHONE: 408-279-0003
FAX: 408-277-0050



3 INT. RATED DOOR THRESHOLD
3"=1'-0"



2 DOOR TYPE
1/4"=1'-0"

ROOM	DOOR (SEE DETAIL 111/)						FIRE RATING (MIN.)	DETAILS			HARDWARE GROUP (SEE SPEC)
	TAG	SIZE - W x H x T (VERIFY IN FIELD)	TYPE	MAT.	FINISH			HEAD	JAMB	THRES.	
ADMIN LOBBY HALL	001	PR 3'-6" x 7'-10" x 1-3/4"	B	WD	CLR		120	15/4	15/4	16/4	2
A-POD CLASSROOM A1	002	3'-6" x 7'-10" x 1-3/4"	A	WD	CLR		120	15/4	15/4	16/4	1
A-POD / LOBBY	003	3'-6" x 7'-10" x 1-3/4"	A	WD	CLR		120	15/4	15/4	16/4	1
B-POD / HCCORRIDOR	004	PR 3'-6" x 7'-10" x 1-3/4"	B	WD	CLR		120	15/4	15/4	16/4	2
C-POD / CORRIDOR	005	PR 3'-6" x 7'-10" x 1-3/4"	B	WD	CLR		120	15/4	15/4	16/4	2
D-POD / CORRIDOR	006	PR 3'-6" x 7'-10" x 1-3/4"	B	WD	CLR		120	15/4	15/4	16/4	2
E-POD / CORRIDOR	007	PR 3'-6" x 7'-10" x 1-3/4"	B	WD	CLR		120	15/4	15/4	16/4	2
F-POD / CORRIDOR	008	PR 3'-6" x 7'-10" x 1-3/4"	B	WD	CLR		120	15/4	15/4	16/4	2
KITCHEN / CORRIDOR	009	PR 3'-6" x 7'-10" x 1-3/4"	B	WD	CLR		120	15/4	15/4	16/4	2

NOTE:

1. DOORS TO BE REPLACED WITH IN KIND NEW FIRE RATED DOORS, TO MATCH IN SIZE AND FINISH. DOOR SIZES TO BE VERIFIED IN FIELD.

LEGEND:

HM - HOLLOW METAL
CLR - CLEAR COAT VARNISH
PTD - PAINTED
WD - WOOD

1 DOOR SCHEDULE

Type B Doors
Each Door is 36' not
42" - TYP

Fire Rating for all new
doors is 90 minutes - TYP

DOOR SCHEDULE AND DETAILS

FIRE ALARM SYSTEM UPGRADE
MAJESTIC WAY ELEMENTARY SCHOOL
1855 MAJESTIC WAY, SAN JOSE, CA 95132
BERRYESSA UNION SCHOOL DISTRICT

REVISIONS

NO.

ITEM

DATE

DRAWN BY: KNU

CHECKED BY: M.B.

SFA JOB NO: 22081

DATE: 04/03/2023

Addendum 1

- GENERAL NOTES
- A. CONTRACTOR RESPONSIBLE FOR REMOVAL OF OLD DOORS AND DEBRIS ASSOCIATED WITH THE SCOPE OF WORK.
- B. CONTRACTOR RESPONSIBLE FOR ANY PAINTING ASSOCIATED WITH THE SCOPE OF WORK.
- C. ALL DOOR ARE ACM AND REQUIRE LAWFUL DISPOSAL.

- FLOOR PLAN NOTES
1. REMOVE (E) DOORS & HARDWARE, (E) FRAMES TO REMAIN, INSTALL (N) DOORS, PANIC DEVICE & HARDWARE. CONTRACTOR TO REMOVE ANY MANUAL DOOR STOPS FROM INDICATED DOORS, SEE SPECS FOR PANIC DEVICE & HARDWARE GROUP.

GRAPHIC KEY

--- 1-HR RATED WALL

--- 2-HR RATED WALL

These doors are N.I.C



FLOOR PLAN - MAIN BUILDING

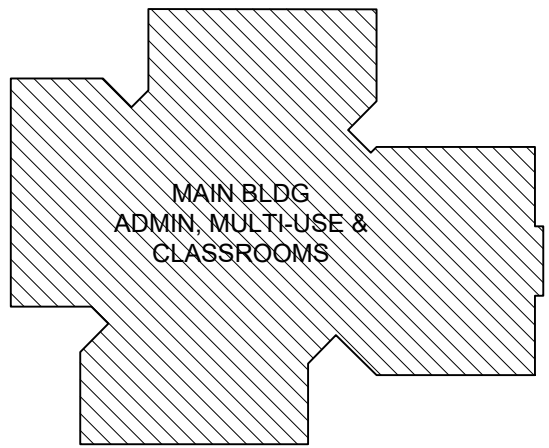
FIRE ALARM SYSTEM UPGRADE
BROOKTREE ELEMENTARY SCHOOL
1781 OLIVETREE DRIVE, SAN JOSE, CA 95131
BERRYESSA UNION SCHOOL DISTRICT

REVISIONS		
NO.	ITEM	DATE

DRAWN BY: KNU
CHECKED BY: M.B.
SFA JOB NO: 22082
DATE: 04/03/2023

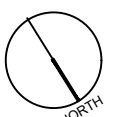
A2.1
BROOKTREE

BUILDING KEY



- P1
P2
P3
P4
P5
P6

RR



1 FLOOR PLAN - MAIN BLDG

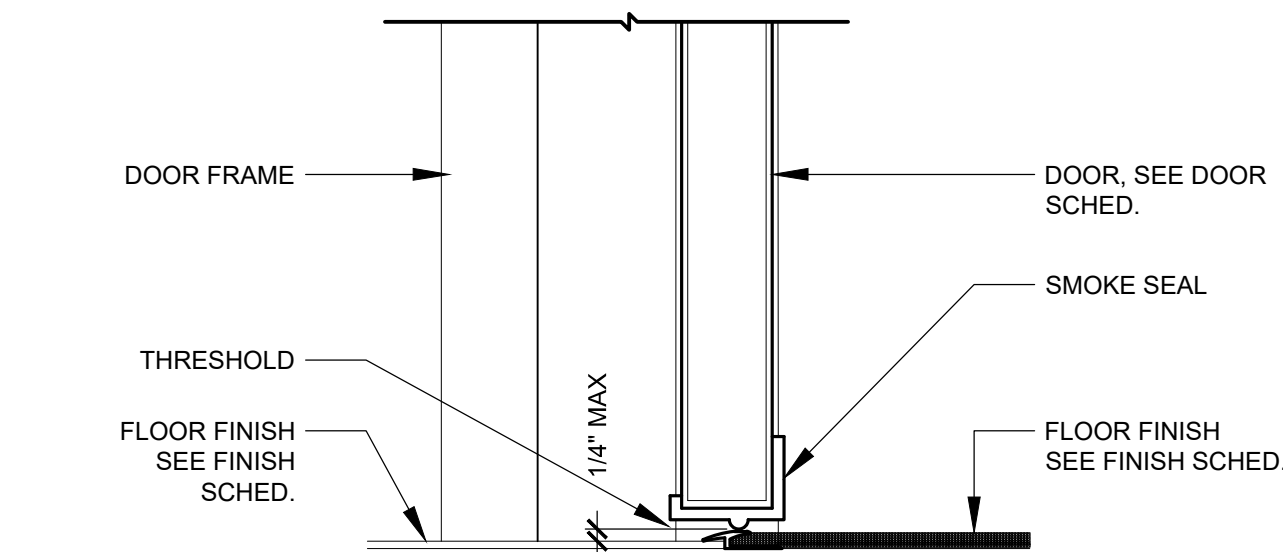
1/8" = 1'-0"

0 2' 4' 8' 16' 24'

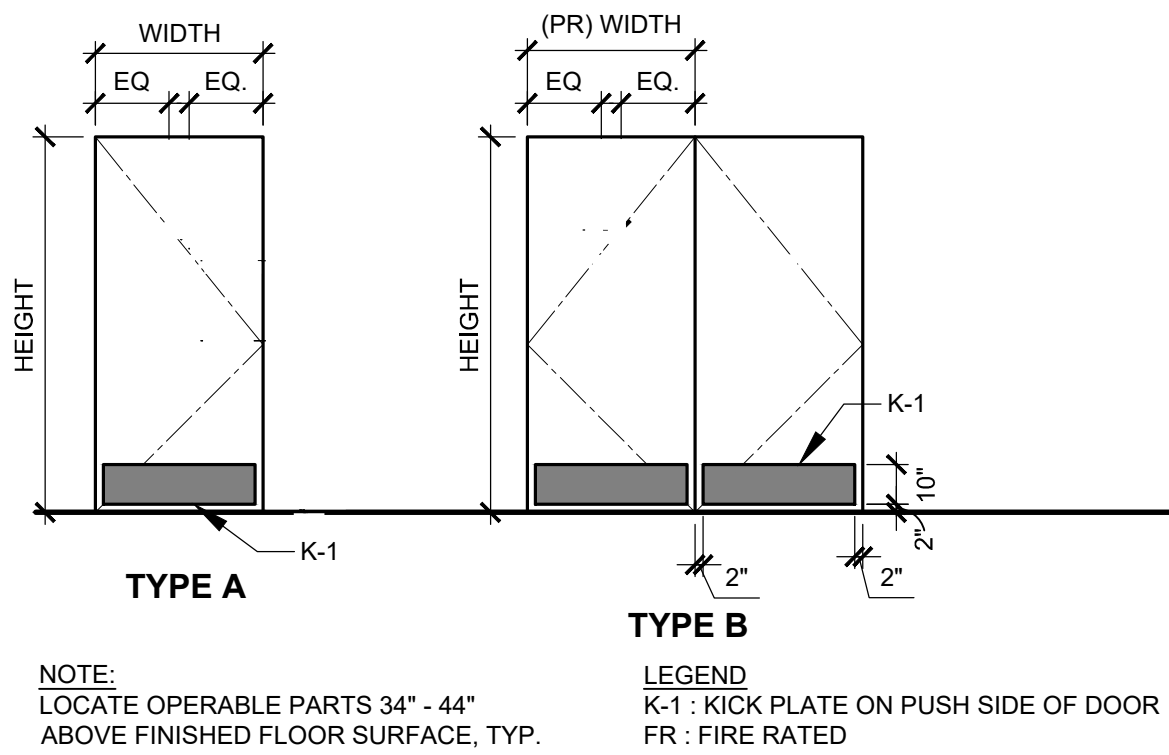
1/8" NORTH

COPYRIGHT © 2023

Addendum 1



3 INT. RATED DOOR THRESHOLD
3"=1'-0"



2 DOOR TYPE
1/4"=1'-0"

ROOM	DOOR (SEE DETAIL 11/-)						FIRE RATING (MIN.)	DETAILS			HARDWARE GROUP (SEE SPEC)
	TAG	SIZE - W x H x T (VERIFY IN FIELD)	TYPE	MAT.	FINISH			HEAD	JAMB	THRES.	
ADMIN LOBBY HALL	001	PR 3'-6" x 7'-10" x 1-3/4"	B	WD	CLR		120	15/-	15/-	16/-	2
A-POD / CORRIDOR	002	PR 3'-6" x 7'-10" x 1-3/4"	B	WD	CLR		120	15/-	15/-	16/-	2
B-POD / CORRIDOR	003	PR 3'-6" x 7'-10" x 1-3/4"	B	WD	CLR		120	15/-	15/-	16/-	2
C-POD / CORRIDOR	004	PR 3'-6" x 7'-10" x 1-3/4"	B	WD	CLR		120	15/-	15/-	16/-	2
D-POD / CORRIDOR	005	PR 3'-6" x 7'-10" x 1-3/4"	B	WD	CLR		120	15/-	15/-	16/-	2
E-POD / CORRIDOR	006	PR 3'-6" x 7'-10" x 1-3/4"	B	WD	CLR		120	15/-	15/-	16/-	2
KITCHEN / CORRIDOR	008	PR 3'-6" x 7'-10" x 1-3/4"	B	WD	CLR		120	15/-	15/-	16/-	2

NOTE:
1. DOORS TO BE REPLACED WITH IN KIND NEW FIRE RATED DOORS, TO MATCH IN SIZE AND FINISH. DOOR SIZES TO BE VERIFIED IN FIELD.

LEGEND
HM - HOLLOW METAL
CLR - CLEAR COAT VARNISH
PTD - PAINTED
WD - WOOD

1 DOOR SCHEDULE

Type B Doors
Each Door is 36' not
42" - TYP

Fire Rating for all new
doors is 90 minutes - TYP

(DSA STAMP AREA)

SUGIMURA
FINNEY
ARCHITECTS

SFA

ARCHITECTURE INTERIORS PLANNING

2155 SOUTH BASCOM AVE.
SUITE 200
CAMPBELL, CA 95003
PHONE: 408-579-0003
FAX: 408-377-0050

DOOR SCHEDULE AND DETAILS

FIRE ALARM SYSTEM UPGRADE
BROOKTREE ELEMENTARY SCHOOL
1781 OLIVETREE DRIVE, SAN JOSE, CA 95131
BERRYESSA UNION SCHOOL DISTRICT

REVISIONS
NO. ITEM DATE

DRAWN BY: KNU
CHECKED BY: M.B.
SFA JOB NO: 22082 DATE: 04/03/2023

A9.2
BROOKTREE

Addendum 1

GENERAL NOTES

- CONTRACTOR RESPONSIBLE FOR REMOVAL OF OLD DOORS AND DEBRIS ASSOCIATED WITH THE SCOPE OF WORK.
- CONTRACTOR RESPONSIBLE FOR ANY PAINTING ASSOCIATED WITH THE SCOPE OF WORK.
- ALL DOOR ARE ACM AND REQUIRE LAWFUL DISPOSAL.

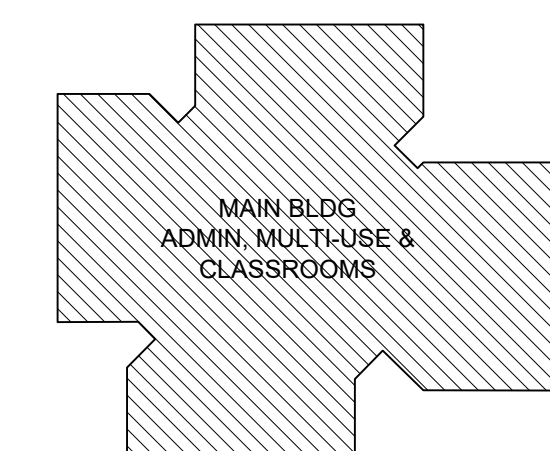
FLOOR PLAN NOTES

- REMOVE (E) DOORS AND HARDWARE. (E) FRAMES TO REMAIN. INSTALL (N) DOORS, PANIC DEVICE & HARDWARE. CONTRACTOR TO REMOVE ANY MANUAL DOOR STOPS FROM INDICATED DOORS, SEE SPECS FOR PANIC DEVICE & HARDWARE GROUP.

GRAPHIC KEY

- 1-HR RATED WALL
--- 2-HR RATED WALL

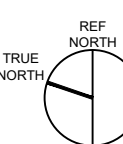
BUILDING KEY



- P7
P6
P5
P4
P3
P2
P1

1 FLOOR PLAN - MAIN BUILDING

1/8" = 1'-0"
0 2' 4' 8' 16' 24'



(DSA STAMP AREA)



FLOOR PLAN - MAIN BUILDING

FIRE ALARM SYSTEM UPGRADE
SUMMERDALE ELEMENTARY SCHOOL
1100 SUMMERDALE RD., SAN JOSE, CA 95132
BERRYESSA UNION SCHOOL DISTRICT

REVISIONS
NO. ITEM DATE

DRAWN BY: KNU
CHECKED BY: M.B.
SFA JOB NO: 22083 DATE: 04/03/2023

A2.1

SUMMERDALE

Addendum 1

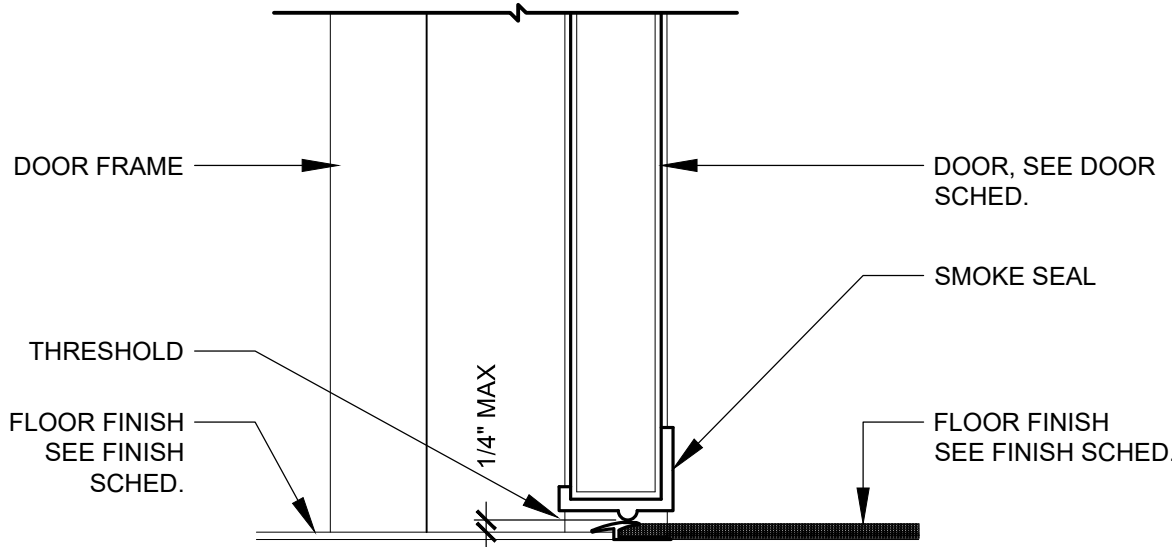
(DSA STAMP AREA)

SUGIMURA
FINNEY
ARCHITECTS

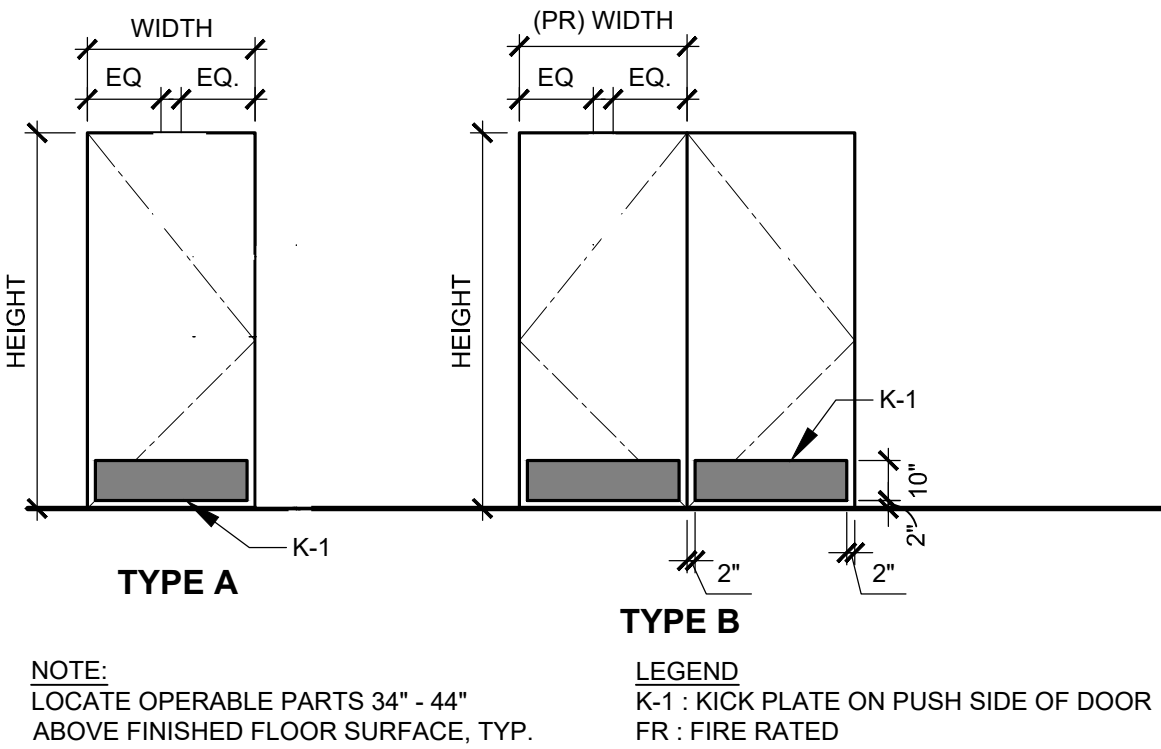
SFA

ARCHITECTURE INTERIORS PLANNING

2155 SOUTH BASCOM AVE.
SUITE 200
CAMPBELL, CA 95003
PHONE: 408-573-6003
FAX: 408-377-6950



3 INT. RATED DOOR THRESHOLD
3\"=1'-0"



2 DOOR TYPE
1/4\"=1'-0"

ROOM	DOOR (SEE DETAIL 11/-)					FIRE RATING (MIN.)	DETAILS			HARDWARE GROUP (SEE SPEC)
	TAG	SIZE - W x H x T (VERIFY IN FIELD)	TYPE	MAT.	FINISH		HEAD	JAMB	THRES.	
ADMIN LOBBY / HALL	001	PR 3'-6\" x 7'-10\" x 1'-3/4\"	B	WD	CLR	120	15/-	15/-	16/-	2
A-POD / CORRIDOR	002	PR 3'-6\" x 7'-10\" x 1'-3/4\"	B	WD	CLR	120	15/-	15/-	16/-	2
B-POD / CORRIDOR	003	PR 3'-6\" x 7'-10\" x 1'-3/4\"	B	WD	CLR	120	15/-	15/-	16/-	2
C-POD / CORRIDOR	004	PR 3'-6\" x 7'-10\" x 1'-3/4\"	B	WD	CLR	120	15/-	15/-	16/-	2
D-POD / CORRIDOR	005	PR 3'-6\" x 7'-10\" x 1'-3/4\"	B	WD	CLR	120	15/-	15/-	16/-	2
E-POD / CORRIDOR	006	PR 3'-6\" x 7'-10\" x 1'-3/4\"	B	WD	CLR	120	15/-	15/-	16/-	2
F-POD / CORRIDOR	007	PR 3'-6\" x 7'-10\" x 1'-3/4\"	B	WD	CLR	120	15/-	15/-	16/-	2
KITCHEN / CORRIDOR	008	PR 3'-6\" x 7'-10\" x 1'-3/4\"	B	WD	CLR	120	15/-	15/-	16/-	2

NOTE:
1. DOORS TO BE REPLACED WITH IN KIND NEW FIRE RATED DOORS, TO MATCH IN SIZE AND FINISH. DOOR SIZES TO BE VERIFIED IN FIELD.

LEGEND
HM - HOLLOW METAL
CLR - CLEAR COAT VARNISH
PTD - PAINTED
WD - WOOD

1 DOOR SCHEDULE

Type B Doors
Each Door is 36' not
42" - TYP

Fire Rating for all new
doors is 90 minutes - TYP

DOOR SCHEDULE AND DETAILS

FIRE ALARM SYSTEM UPGRADE
SUMMERDALE ELEMENTARY SCHOOL
1100 SUMMERDALE RD., SAN JOSE, CA 95132
BERRYESSA UNION SCHOOL DISTRICT

REVISIONS

NO. ITEM DATE

DRAWN BY: KNU

CHECKED BY: M.B.

SFA JOB NO: 22083 DATE: 04/03/2023